

AMAZER/AMAZER PLUS

fragrance diffuser product manual



PHOENICIA
essence™

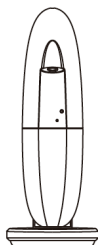
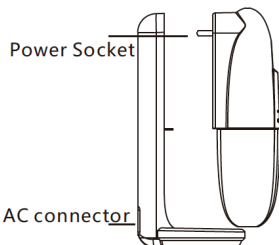
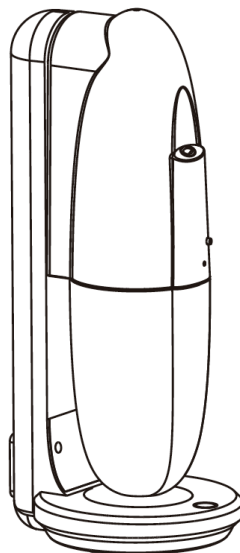
SPECIFICATIONS

Plug and Play

Bluetooth Control

4 Intensity Levels

| | |
|----------|--------------------|
| Product | Amazer Plus |
| Size | 3.4" x 2.5" x 8.4" |
| Volume | 4 fl oz |
| Coverage | 1080 sf |



Atomized head

Grade button

Reset button

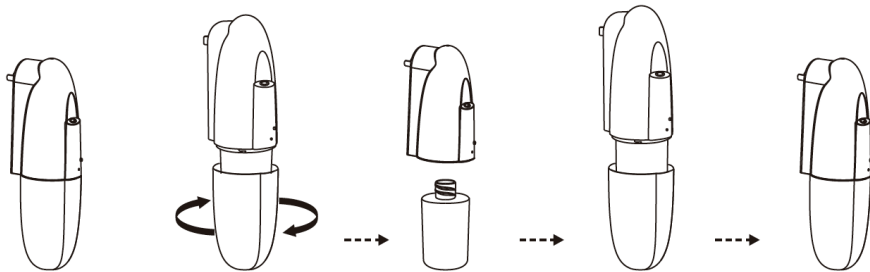
Oil bottle

Atmosphere lamp

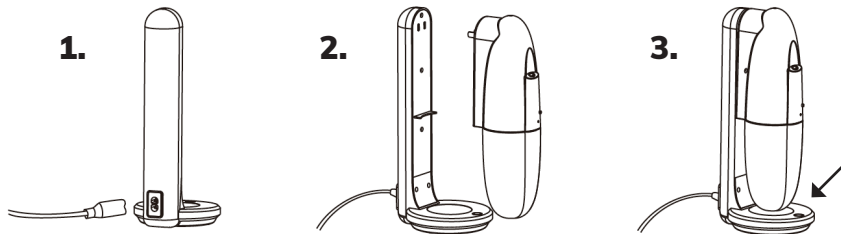
Touch-screen button



INSTALLATION

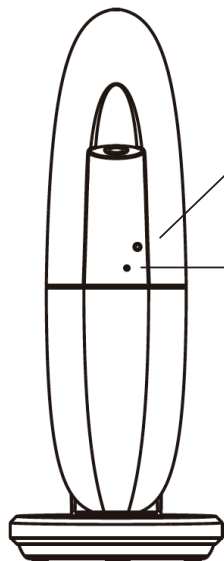


1. Unscrew the bottom cap
 2. Fill bottle with fragrance
 3. Screw the bottle in and the bottom cap
 4. Plug in to base or outlet
-



1. Plug in power cord to base and outlet
2. Plug diffuser into base
3. Short press the button on base to choose light color. Long press to turn the LED light on and off. Colors: *Light blue/dark blue/light purple/pink*

HOW TO OPERATE



Reset

- Short press to restore the original password **"8888"**
- Long press, until hearing a sound for restore factory settings.

Indicator

When light is on, the diffuser is in working mode.

CONCENTRATION & CONSUMPTION

| Grade | G1 | G2 | G3 | G4 |
|---------------------|------|------|------|------|
| Pausing time (s) | 285s | 135s | 85s | 60s |
| Consumption (ml/hr) | 0.07 | 0.15 | 0.23 | 0.30 |

NOTES

1. The machine diffuses for 15 seconds for each grade.
2. Consumption may differ based on grade and oil.

CLEANING DIFFUSER

To protect the life of your diffuser and ensure optimal performance, be sure to clean your diffuser when you **refill the bottle with fragrance, change fragrances or you notice the atomization volume goes weak.**

Steps to Clean:

1. Turn off diffuser
 2. Unscrew lower cover and take out fragrance bottle
 3. Soak fragrance bottle in alcohol for 5-10 minutes
 4. Fill fragrance bottle with isopropyl alcohol, reattach to diffuser and turn on for 5-10 min
 5. Dispose of alcohol, air out bottle and replace with fragrance
-

WARNING

1. Please keep the machine vertical. Tilt or lie flatly may cause the oil overflow. The efficiency of the machine may be affected.
2. Shall not modify, disassemble or repair the machine. If any failure happens to the machine, please contact our technical personnel.



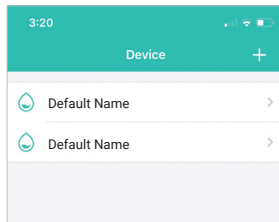
CONNECTING BLUETOOTH

Download the app for more convenience and control.

*Bluetooth connection is not compatible with Amazer Push

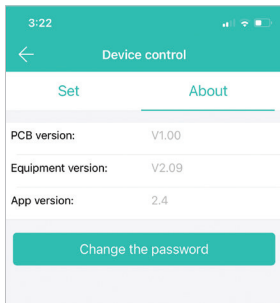


1. Turn on diffuser
2. Open Scent Marketing app on smart device
3. Locate diffuser (default name will appear)
4. Enter default password - 8888
5. Customize your diffuser settings

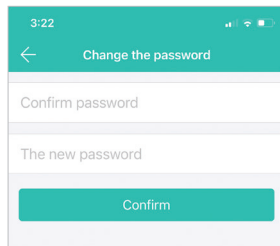


Add
new
device

To change default password (8888) to custom password, navigate to the ABOUT tab.



Customize
Password



CONNECTING BLUETOOTH

Custom schedule allows you to program multiple start/stop times, intensity levels, and days of operation

11:05

Device control Save

Set About

Name:
Diffuser Name

Label:
Entry Way

+ Add custom schedule

05:00 - 08:30 Grade: 3
Every day

09:00 - 12:00 Grade: 4
Every day

Custom name

Diffuser location

Add custom schedule

Schedule ON/OFF

11:05

Working period setting Save

| The start time | The end time |
|----------------|--------------|
| 04:59 | 07:29 |
| 05:00 | 08:30 |
| 06:01 | 09:31 |
| 07:29 | 10:01 |
| 08:30 | 11:01 |

Repeat

Mon Tue Wed

Thur Fri Sat Sun

☒ Grade 3 +

☐ Custom

| Work Time(S) | Stop Time(S) |
|--------------|--------------|
| 3 | 60 |
| 4 | 61 |
| 5 | 62 |

Set Start/Stop time

Days of operation

Select intensity level

Custom setting to adjust the amount of secs the device diffuses and the amount of secs it pauses.

For any questions about connecting your diffuser through bluetooth,
please contact customerservice@phoeniciaessence.com

TROUBLESHOOTING

For optimal performance and to avoid any clogging of your diffuser, only use essential oil blends from Phoenicia Essence or Arizona Air-Scent. These fragrances have been carefully developed specifically for our diffusers. Failure to do so may cause damage to your machine.

Always ensure your diffuser is kept in an upright position. Tilting of diffuser may cause oil to leak onto surface.

| PROBLEM | POSSIBLE CAUSE | SOLUTION |
|--|--|---|
| Device not diffusing | <ul style="list-style-type: none">• Device is in “pause mode” in between cycles• Faulty pump | <ul style="list-style-type: none">• Wait for diffuser to change to “working mode”• Replace pump* |
| Device does not turn on | <ul style="list-style-type: none">• Device not plugged in• Faulty power adapter• Faulty power source | <ul style="list-style-type: none">• Check if device is plugged in• Replace power supply adapter*• Check power source |
| Can hear device working but fragrance mist is not visible and cannot smell fragrance | <ul style="list-style-type: none">• Diffuser core is clogged• Device is in “pause mode” in between cycles | <ul style="list-style-type: none">• Replace fragrance with alcohol and through diffuser for 5 min• If that does not work, replace diffuser core*• Wait for diffuser to change to “working mode” |
| Fragrance oil is leaking | <ul style="list-style-type: none">• Fragrance bottle is loose• Diffuser is not vertical | <ul style="list-style-type: none">• Ensure fragrance bottle is fastened straight and tight• Ensure diffuser is standing upright |

*For replacement parts, please contact customerservice@phoeniciaessence.com